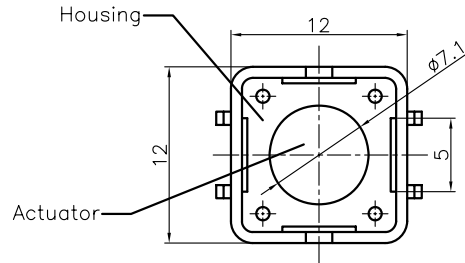


REV.	DESCRIPTION	DRAWN	CHECKED	APPROVED
A	NEW RELEASE	HP 23/06/05		

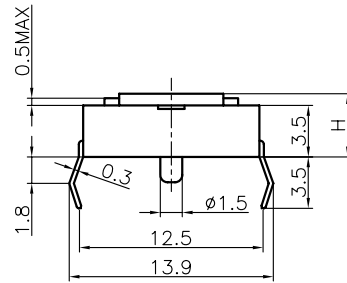


NOTES:

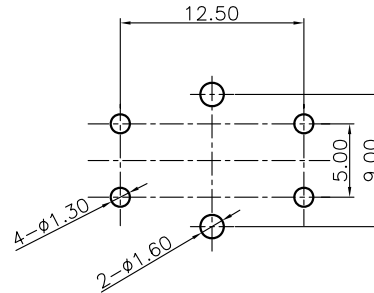
1. SPECIFICATIONS

- switch function: Single pole Single throw
- contact rating: 50mA at 12vdc
- insulation resistance: 100MΩ min at 500vdc
- contact resistance: 100mΩ max
- operating life: 100,00 cycles
- operating force: see below

- stop strength: place the switch such that vertical, a static load of 3kgf shall be applied in the direction of stem, operation for a period of 15 secs.
- stroke: $(6 \times 6) 0.25^{+0.2mm/-0.1mm} (12 \times 12) 0.35 \pm 0.1mm$
- operation temperature range: -20°C to 70°C
- storage temperature range: -20°C to +70°C
- wave soldering: recommended solder temperature at 500°F (260°C) max. 5 seconds, subject to pcb 1.6mm thickness.
- hand soldering: use soldering iron of 30 watts, controlled at 608°F (320°C) approximately 2 seconds while applying solder.

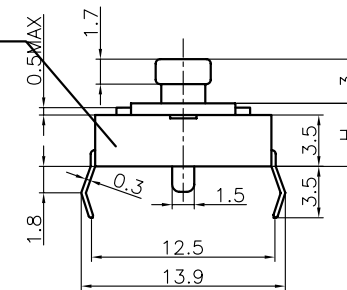
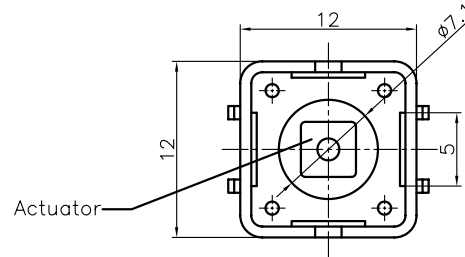
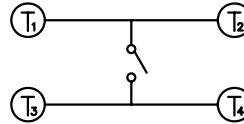


WITHOUT COVER



RECOMMEND P.C.B. LAYOUT
TOLERANCE = ±0.05

SCHEMATIC



WITH COVER

3. PRODUCT NUMBER CODE:

DS1041 - X X X X X X

- Cover type
X: W/O cover
S: W/ cover
- Packing type
A: polybag
B: tube
R: tape & reel
- Actuator color
U: blue K: black N: brown R: red
S: Salmon Y: yellow
- Housing color
U: blue K: black N: brown R: red
S: Salmon Y: yellow
- Profile Height (DIM. H)
1: 4.3mm 2: 5.0mm 3: 7.0mm
4: 7.3mm 5: 9.5mm 6: 13.0mm
- Size
2: 12mm X 12mm

GENERAL TOLERANCE		ANGLE TOLERANCE		PROJECTION	TITLE
X.	±0.60	X.	±5°	mm	TACT SWITCH DIP TYPE
.X	±0.38	.X	±3°	A4	SERIES DS1041
.XX	±0.25	.XX	±2°	KAN1210-0731B 12x12x7 mm 1041	
DRAWING TYPE	CUSTOMER		SCALE 1:1 SHEET 1 OF 1		
DRAWING NO.	C-DS1041-XXXXXX		DRAWING NO.		